

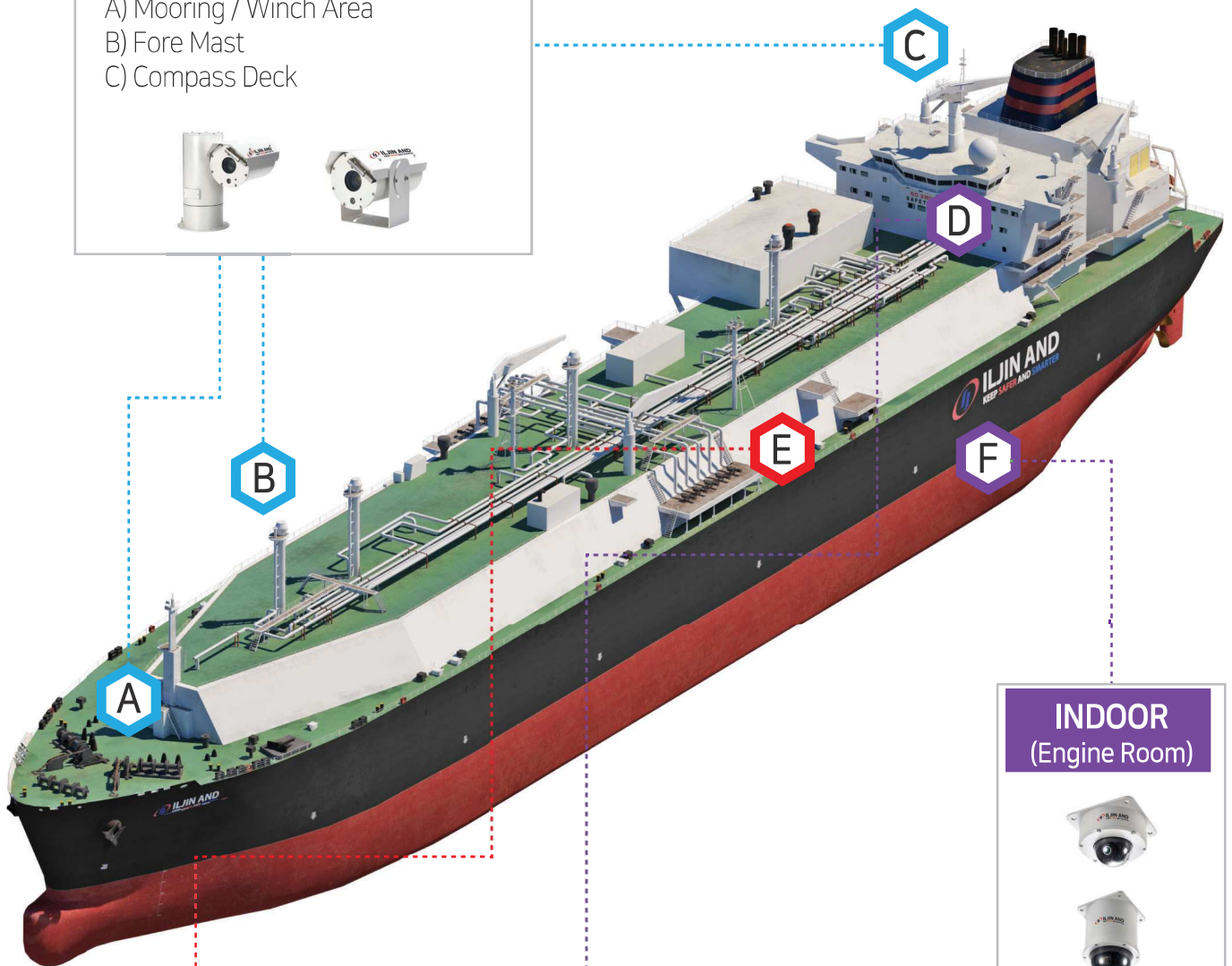
# Excellent Marine Surveillance System

## Locations for CCTV Cameras

Most advanced, Most durable, Most optimized design for Harsh marine environment.  
Always Keep **SAFER** and **SMARTER** for your vessels.

### OUTDOOR

- A) Mooring / Winch Area
- B) Fore Mast
- C) Compass Deck



### INDOOR (Engine Room)



### Manifold area (Explosion Proof)



### INDOOR (Accommodation)



# Excellent Marine Surveillance System

## Technical Benefits



### Stainless Steel 316L

SUS 316L Material with White Powder Coating for Anti-Corrosion



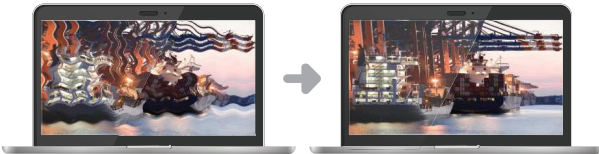
### Helical Gear & BLDC Motor

Helical Gear & BLDC Motor for Longer Lifetime



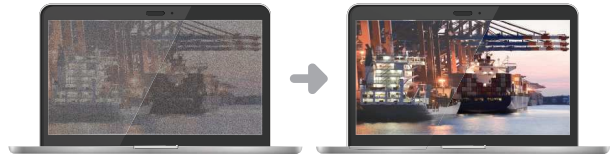
### Gyro Sensor

Automatic digital image stabilizing function with Gyro Sensor



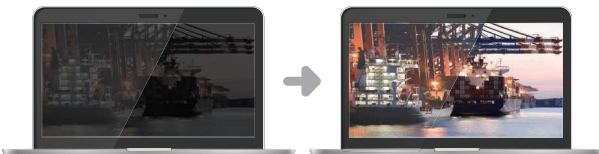
### H.265 Codec Support

Provide high quality image transfer and optimized **bandwidth** usage



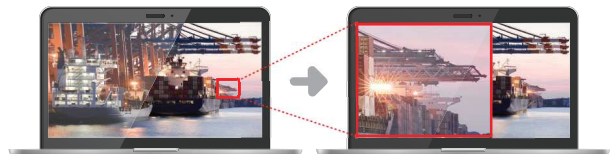
### Screen brightness

Clear & Vivid image provided by balancing big difference between the bright and dark areas (WDR)



### High Quality and Advanced Camera Modules

High magnification & High resolution lenses designed for improved detection accuracy(32X)



### Certified by IEC 60945, EMC TEST and ATEX & IECEX



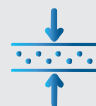
IEC 60945



IECEX



ATEX



### Excellent Video Transcoder System(XVTS)

This special equipment enables real-time monitoring of large video data under very limited bandwidth

(min. 265 kbps)



# Excellent Marine Surveillance System

## Kind of CCTV Camera

### 1 OUTDOOR CCTV CAMERA



Type	PTZ	FIXED
Model	XCCT-DPT101	XCCT-DFI101
Pan/Tilt angle	360° / ±90°	-
Optical Zoom	32X	32X
IR Light	40m /100m (Opt.)	40m
IP Grade	IP 66	IP 66
Dim(WxHxD)	354 x 375 x 290mm	174 x 215 x 373mm
Weight	Abt. 15kg	Abt. 5.8kg

### 2 INDOOR CCTV CAMERA



Type	PTZ DOME	FIXED DOME	BULLET
Model	XCCT-DSP101	XCCT-DSP101	XCCT-DBU101
Pan/Tilt angle	360° / 210°	-	-
Optical Zoom	32X	-	-
IR Light	-	30m	30m
IP Grade	IP 66 / IP 67	IP 66 / IP 67	IP 66 / IP 68
Dim(WxHxD)	175 X 256 X 175mm	150 x 105 x 150mm	106 x 131 x 233mm
Weight	Abt. 5kg	Abt. 2kg	Abt. 1.3kg

#### »» Technical benefits

IEC 60945 &  
EMC TEST  
APPROVED

Operating  
Temperature  
-25~+55°C

SUS316L  
White Powder  
Coating

H.265 CODEC

Image  
Stabilization  
by Gyro Sensor



# Excellent Marine Surveillance System

## Kind of CCTV Camera

### 3 EXPLOSION PROOF OUTDOOR CCTV CAMERA

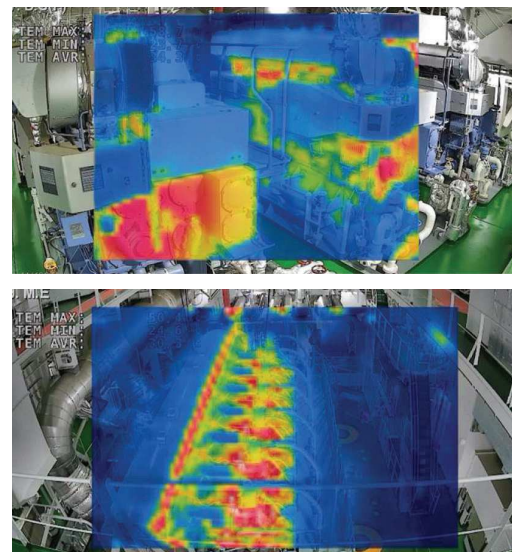
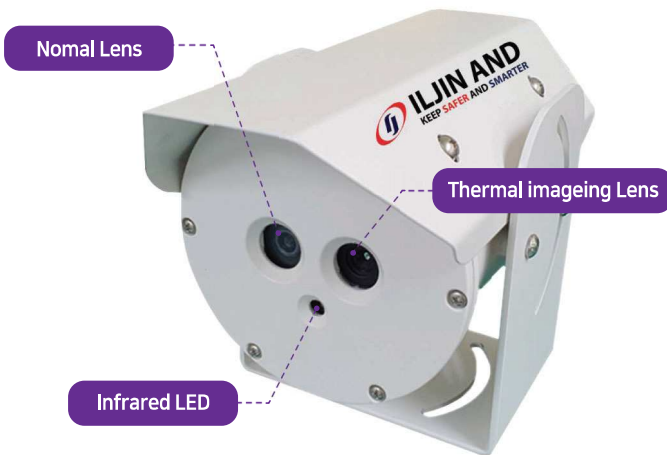


Type	PTZ	FIXED
Model	XCCT-Exd-P001	XCCT-Exd-F001
Pan/Tilt angle	360° / ±90°	-
Optical Zoom	32X	32X
Operation Temp.	-40°C ~ +70°C	-40°C ~ +70°C
IP Grade	IP 66 / IP 68	IP 66 / IP 68
Dim(WxHxD)	373 x 392 x 350mm	161.4 x 245.2 x 380mm
Weight	Abt. 23kg	Abt. 10kg

#### Technical benefits

ATEX & IECEX APPROVED	GAS GROUP IIC Zone 1	MAX. SURFACE TEMP. T6	SUS316L White Powder Coating	H.265 CODEC	Image Stabilization by Gyro Sensor
-----------------------	----------------------	-----------------------	------------------------------	-------------	------------------------------------

### 4 DUAL SENSOR THERMAL DETECTION CAMERA



#### Technical benefits

Monitoring for real time temp. & Full HD CCTV image	Supplement Error & Malfunction of Fire detection sensor	Up to 15 temp. detection zones set
---	---	------------------------------------